

## Common Dialog Boxes When Starting BB Collaborate.

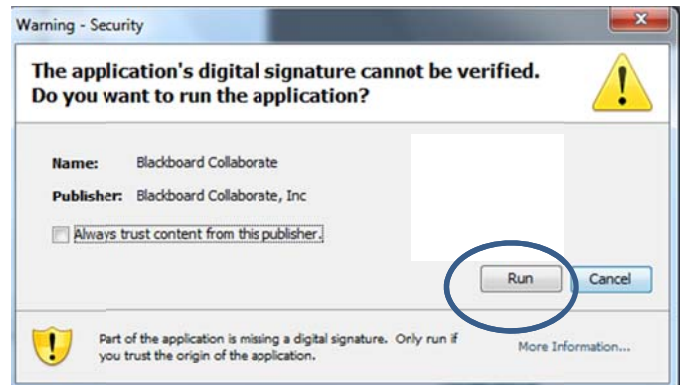
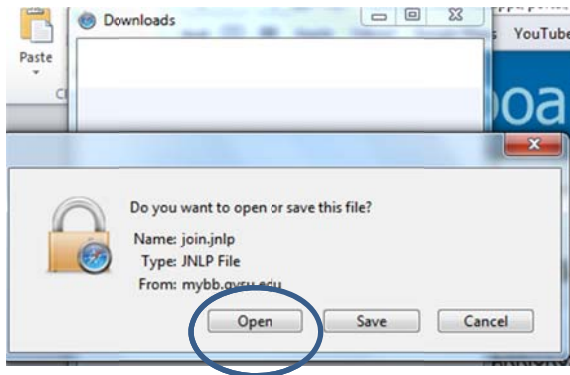
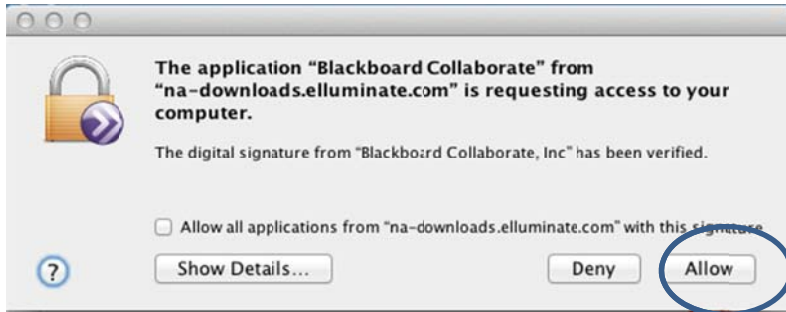
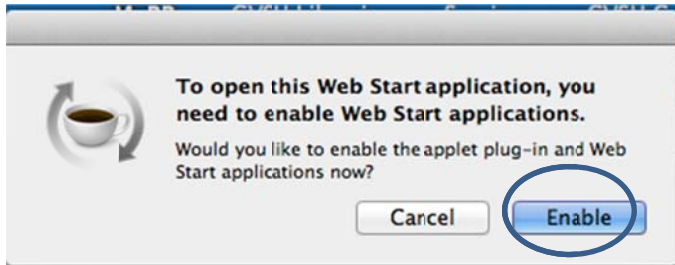
Various browsers will have different dialog boxes that you may need to click through. Find the browser you are using and watch for the various dialog boxes.

If you have any problems getting Collaborate to launch, always update your Java before trying other measures. Visit [www.java.com](http://www.java.com) to get the latest version

Browsers: at this time we recommend any browser except Internet Explorer.

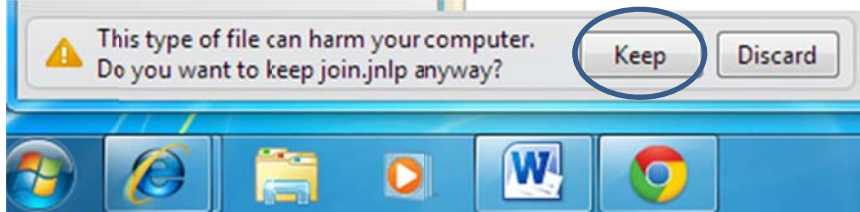
Below are a few of the screens you *MAY* encounter.

### Safari

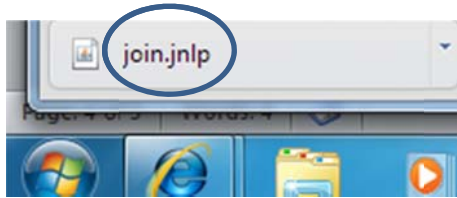


## Chrome

Watch for dialogs you need to respond to in the LOWER LEFT of the Chrome screen



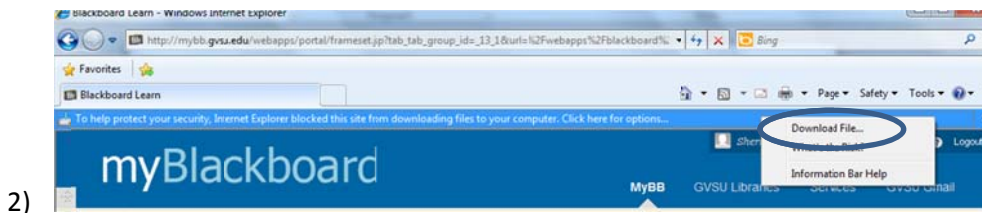
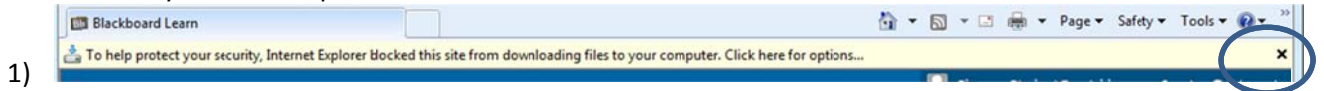
Click Keep



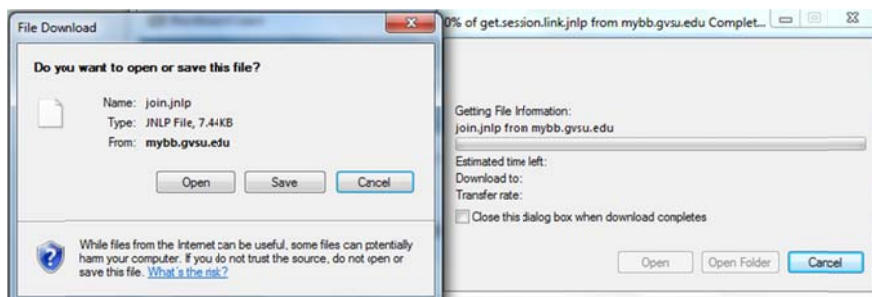
double click Join.jnlp

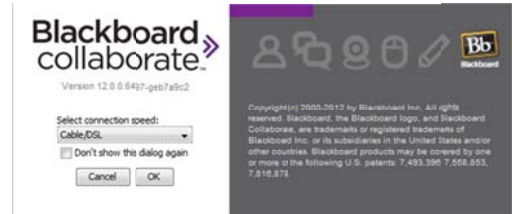
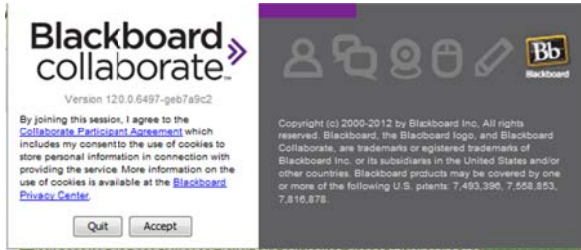
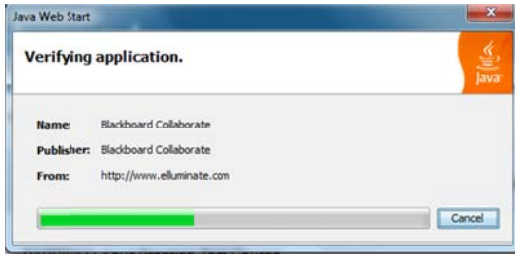
## Internet Explorer: (not recommended)

Click the X in the yellowish strip and choose download file



## Common Screens you will see in most browsers.





Again,,, you may or may not see the above screens. It is also possible you will see a slight variation of these screens.